

A scenic landscape photograph of a river valley. In the foreground, a green hillside is covered with a flock of sheep grazing. A river flows through the middle ground, curving around a sandy bar. The background features rolling green hills and a range of mountains under a blue sky with white clouds. A prominent white rock formation is visible on the left bank of the river.

Golden Fleece (NZ) Ltd

Product Catalogue

A1 Jenny Scuff

\$30.00



Oaten



Our best selling basic scuff

Upper

25mm Sheepskin Shearling

Sole

2.5mm EVA sole (HAS left & right foot)

Suitable for indoor & light outdoor use

Sole is non marking eva

Machine washable

Colours

White, Oaten, Champagne, & Grey

A2 Capella Scuff

\$35.00



Oaten



Our top of the range scuff.

This scuff has foam innersoles and a standard footwear runnerboard for improved rigidity and stiffness.

This scuff is very popular.

Upper

25mm Sheepskin Shearling.

Sole

Cattle hide sole, adhered to runnerboard.

Foam innersoles for added comfort.

Suitable for indoor & light outdoor use.

Has left and right feet.

Colours

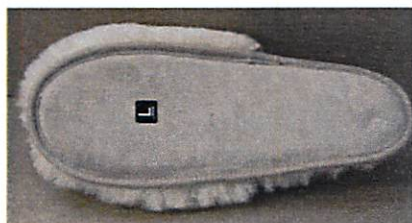
White, Oaten, Champagne & Grey.

A5 Max Scuff

\$35.00



Oaten



Another popular scuff style, with foam innersoles and a cattle hide sole.

Upper

25mm Sheepskin Shearling

Sole

Cattle hide sole.

Foam innersoles for added comfort

Suitable for indoor and light outdoor use.

Machine washable.

Colours

White, Oaten, Champagne & Grey.

Sheepskin Slippers

A8 Sheepskin Mule (5~11) \$35.00



Chestnut



A good selling multi-purpose scuff

Upper

Premier 15mm twiface

Sole

Hard wearing but flexible EVA
Suitable for indoor & outdoor use.
Sheepskin innersoles to mould to your foot.
EVA is non marking

Colours

Cane, Chestnut, and Chocolate

A11 Rolled Collar Scuff \$40.00



Cane



A good selling scuff, with a soft sole and foam inners.

Upper

Premier 15mm twiface.

Sole

Foam innersole for added comfort.
Cattle hide sole for hard wearing bottom.
Sheepskin innersole to mould to your foot.
Suitable for indoor use only.

Colours

Cane, Chestnut and Chocolate.

A12 Josie Scuff \$50.00



Cane



Burgundy

An excellent selling scuff, with added flair and styling.
Very popular with American customers.
Recently restyled to give more support.

Upper

Premier 15mm twiface

Sole

Heavy duty EVA sole, suitable for indoor & outdoor use.
Sheepskin innersole to mould to your foot.

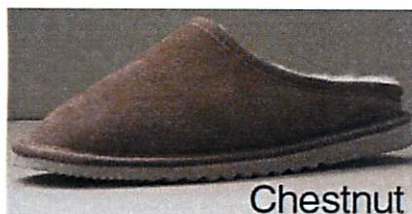
Colours

Cane, Chestnut and Chocolate.

Sheepskin Scuffs

A13 Dutch Clog

\$45.00



Chestnut



Cane

A very stylish fitting scuff.

Upper

Premier 15mm twiface.

Soles

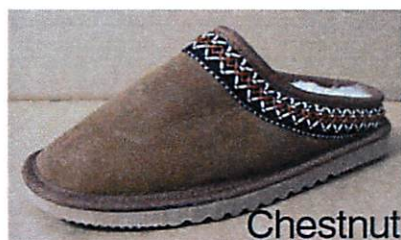
Heavy duty EVA, suitable for indoor & outdoor use
Sheepskin innersole to mould to your foot.

Colours

Cane, Chestnut, Chocolate and Black

A21 Braided Clog

\$50.00



Chestnut



Black

Another new and very stylish full fitting scuff.

Upper

Premier 15mm twiface.

Stylish Braid sewn to the upper.

Sole

Heavy duty EVA, suitable for indoor & outdoors use.
Sheepskin innersoles to mould to your foot.

Colours

Cane, Chestnut, Chocolate and black.

A22T Loafer Clog

\$50.00



Chocolate



Chestnut

The most stylish and comfortable clogs yet!
The clog has a side stitch sole, front toe hide
and removable innersoles

Upper

Premier 15mm twiface

Toe piece protects the front of the clog, and
lifts the vamp for comfort.

A22T Loafer with the Taree sole, is the standard
clog with removable innersoles with a different sole.
The Taree sole is a lightweight sole, great for
wearing indoors. Proving to be very popular

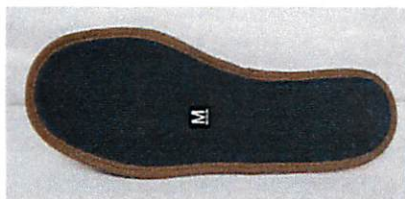
Colours

Cane, Chestnut, Chocolate, Grey & Black.

Sheepskin Scuffs

A14 Hide Scuff

\$28.00



A good selling scuff, with foam innersoles for extra comfort.

Upper

Cattle hide upper, for extra strength.
Wool lining for warmth.

Sole

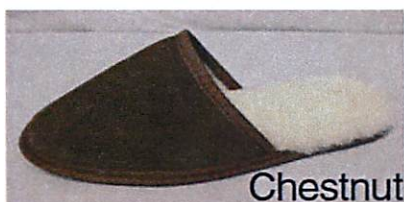
3mm EVA sole, suitable for indoor and light outdoor use. Sole is non marking
Foam innersoles for extra comfort.
Sheepskin innersole to mould to your foot.

Colours

Cane, Chestnut, Chocolate, Navy and Green.

A15 Hide Scuff (Hide Sole)

\$30.00



A good selling scuff, with an upmarket hide sole.

Upper

Cattle hide upper for extra strength.
Wool lining for warmth.

Sole

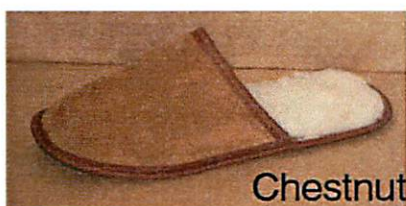
Cattle hide sole for indoor use only.
Foam innersoles for added comfort
Sheepkin innersole to mould to your foot.

Colours

Cane, Chestnut, Chocolate, Navy and Green.

A17 Budget Hide Scuff

\$20.00



Our best selling scuff, with hide cap and wool lining.

Upper

Cattle hide upper, for extra strength.
Wool lining innersole and cap.

Sole

2.5mm EVA sole, suitable for indoor and light outdoor use.
EVA is non marking.

Colours

Cane, Chestnut, Chocolate, Green and Navy.

Sheepskin Scuffs

B2 John Hide Slipper \$55.00



The John Hide, is a tailored mens slipper with elastic gussets for extra flexibility and support., combined with a cattle hide upper for extra wear and strength.

Upper

Cattle hide upper for added strength (and wear).
Wool fabric for warmth, which moulds to your foot.
Gussets in the upper to enable the upper to flex with your foot.

Sole

Heavy duty EVA, suitable for indoor and outdoor use
Sheepskin innersole to mould to your foot.
EVA is non marking.

Colours

Cane, Chestnut, Chocolate, and Navy.

B7 Chris Slipper \$45.00



The Chris Sheepskin is a basic Sheepskin Mens Slipper.

Upper

Standard 15mm twinface.
Upper strengthened with binding.

Sole

Heavy duty eva.
Sheepskin innersole to mould to your foot.
EVA is non marking.

Colours

Cane, Chestnut, and Chocolate.

B7T Mark Slipper \$48.00



Our newest Men's Slipper, with full sheepskin upper and side stitch sole.

Upper

Standard 15mm Twinface.
Upper Strengthened with binding.

Sole

Taree TPR side stitch sole, which is glued and lock stitched onto the slipper.
Sole is light, flexible and hard wearing.
Sheepskin innersole moulds to your foot.

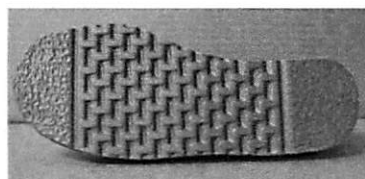
Colours

Cane and Chestnut

Men's Slippers Men's Slippers

B5 Cabin Boot

\$60.00



Classic Mens slipper design with a zip in the front for easy entry and exit.

Upper

Standard 15mm twiface.

Zip in front for easy entry and exit.

Sole

Sheepskin innersole to mould to your foot.

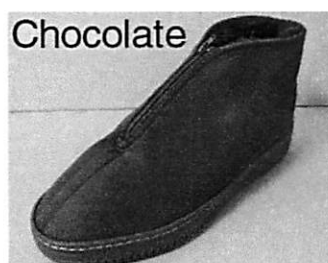
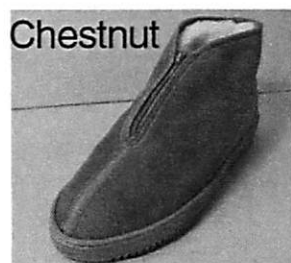
Heavy duty EVA sole, suitable for indoor and outdoor use.

Colours

Cane, Chestnut, Chocolate.

B8 Southlander Boot

\$75.00



A classic sheepskin slipper design, with a zip for easy entry & e:

Upper

Premier 15mm twiface.

Zip in front for easy entry & exit.

Sole

Removable padded sheepskin innersole moulds to your foot.

5mm EVA innersole for added grip and durability.

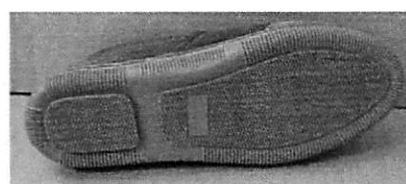
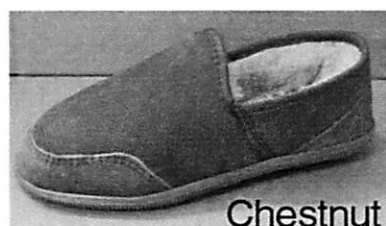
Lockstitch side stitch machine locks the sole on.

Colours

Cane, Chestnut & chocolate.

B6T Westland Taree Slipper

\$64.00



Our top of the range mens slipper, with a side stitch sole for added durability.

Upper

Premier 15mm twiface

Tailored upper with cattle hide toe piece & heel counter for extra strength and wear.

Sole

Removable padded sheepskin innersole, moulds to your foot.

Moulded TPR sole for extra grip and durability.

Lockstitch side stitch machine locks the sole on.

Colours

Cane, Chestnut, and Chocolate.

Men's Slippers

Men's Slippers

C1 NZ Baby Bootie \$15.00



Cane



The traditional New Zealand Baby Booty style.
Very popular.

Upper

Standard 15mm twinface.
Ribbon secures the booty to the foot.

Sole

Sheepskin innersole moulds to your foot.
Bound bottom, to strengthen the seams.

Colours

Cane, Chestnut, and assorted.

C13 Velcro Baby Boot \$25.00



Cane



Chestnut

Upper

Standard 15mm twinface.

Open sides seams, to allow easy entry and exit.

Sole

Sheepskin innersole to mould to the foot.
Bound bottom to strengthen the seams.

Colours

Cane, chestnut and chocolate.

C3 Kids Paddy Slipper \$35.00

Chocolate



Chestnut



The childrens version of the Paddy Slipper.
Our most popular childrens slipper.

Upper

Standard 15mm twinface.
Ankle height upper, which can be worn turned down, or up as a boot.

Sole

5mm flat EVA sole, for indoor and outdoor use.
Sheepskin innersole to mould to the foot.
Bound bottom to protect the seams.

Colours

Cane, Chestnut and Chocolate.

Childrens Slippers Childrens Slippers

C4 Kids HT Boot

\$40.00



Chestnut



Chocolate

The children's version of the adult HT boot. This item can be worn upright as a boot, or have the collar turned over to become a slipper.

Upper

Standard 15mm twiface.

The boot has a support at the rear to strengthen it, and hold it upright.

Sole

Heavier sheepskin EVA sole for indoor and outdoor use.

Sheepskin innersole to mould to your foot.

Non marking EVA sole.

Colours

Cane, Chestnut and Chocolate.

C5 Kids Mid Calf Boot

\$45.00



Oxford



Chocolate



The children's version of the adult American Boot.

Upper

Standard 15mm twiface

A tailored upper, for improved fit and comfort.

The boot has a hide support at the rear to strengthen it, and hold the boot upright.

Sole

Heavier boot EVA sole for indoor and outdoor wear.

Sheepskin innersole to mould to your foot.

Non marking EVA sole.

Colours

Cane, Chestnut, Chocolate, and Black.

C6 Kids Mate Slipper

\$40.00



The children's version of the favourite American Slipper. Basically, an upmarket version of the Paddy.

Upper

Standard 15mm twiface.

A front hide keeper to strengthen the front seam.

Ankle height upper, which can be worn turned down, or turned up as a boot.

Sole

Heavier profile sole for indoor and outdoor use.

Non-marking EVA sole.

Colours

Cane, Chestnut and Chocolate.

Children's Slippers Children's Slippers

D1 HT Boot

\$50.00



Chestnut



Cane

New Zealand's favourite sheepskin boot style.

Upper

Standard 15mm sheepskin upper.
Ankle height boot which can be worn turned up, or down.
Hide support at the back to strengthen and support the upper.

Colours

Cane, Chestnut, and Chocolate.

D3 Mid Calf EVA Boot

\$80.00

Chestnut



Cane



A classic American style, that is now universally popular.
This boot has a more tailored fit, and therefore fits more firmly to the foot (meaning a more snug fit).

Upper

Premier 15mm sheepskin upper.
Burt boot comes half way up your calf.
Hide support at the rear, and toe piece at the front, strengthen and support the upper.

Sole

Heavy duty EVA sole, suitable for indoor and outdoor use.
Non marking EVA sole.

Colours

Cane, Chestnut, Chocolate and black.

D4 3/4 Calf EVA Boot

\$90.00



Chocolate



The top of the range EVA sole boot, which is now popular worldwide. The boot is the taller version of the Burt style, and is tailored to fit snugly.

Upper

Premier 15mm sheepskin upper.
Promo boot comes three quarters of the way up your calf.
Hide support at the rear and the (optional) toe cap, strengthen and support the upper.

Sole

Heavy duty EVA sole, suitable for indoor and outdoor use.
Sheepskin innersoles to mould to your foot.
Non marking EVA sole.

Colours

Cane, Chestnut, Chocolate and Black.

Sheepskin Boots

D5 Full Calf EVA Boot \$105.00



Cane



Chestnut

The top of the range EVA sole boot, which is now popular worldwide. The boot is the taller version of the Promo Style and is tailored to fit snugly.

Upper

Premier 15mm sheepskin upper.

The height of the boot is just below the knee. Hide support at the rear and the (optional) toe cap, strengthen and support the upper.

Sole

Heavy duty EVA sole, suitable for indoor and outdoor use.

Sheepskin innersoles mould to your feet.

Non marking EVA sole.

Colours

Cane, Chestnut, Chocolate and Black.

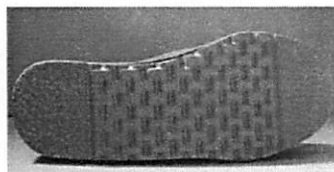
D7 Cossack EVA Boot \$85.00



Chestnut



Cane



An old classic, which continues to sell well in most countries. The vertical front of the boot, gives plenty of room for your toes.

Upper

Premier 15mm sheepskin upper.

Upper comes mid way up your calf.

Hide support at the rear to strengthen & support.

Bound seams for extra strength.

Sole

Heavy duty EVA sole suitable for indoor & outdoor use.

15mm sheepskin innersoles to mould to your foot.

Non marking EVA soles.

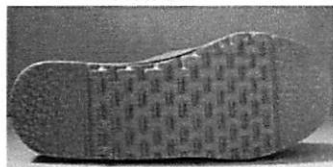
Colours

Cane, Chestnut, Chocolate and Black.

D19 Short Button Boot \$105.00



Cane



A new style of EVA boot which is becoming popular. The boot is the same height as our Mid Calf Boot, it has a functional button on the out side of the boot.

Upper

Premier 15mm sheepskin upper. The height of the boot is part way up the calf. Hide support at the rear strengthens and support the upper.

Sole

Heavy duty EVA sole, suitable for indoor and outdoor use. Sheepskin innersoles mould to your feet. Non marking EVA sole.

Colours

Cane, Chestnut, Chocolate and Black

Sheepskin Boots

E3 Mid Calf S/S Boot \$95.00



Cane



The mid calf boot, is the premier top quality sheepskin boot, with a protective toe cap.

Upper

Premier 15mm sheepskin upper.

Mid Calf boot comes mid way up your calf. Hide support at the rear and toe cap at the front protect and support the upper.

Sole

Removable padded sheepskin innersole that moulds to your foot.

TPR sole for extra durability.

Lockstitch machine locks the soles on.

Colours

Cane, Chestnut, Chocolate, Grey and Black.

E4 3/4 Calf S/S Boot \$110.00



Chestnut



Oxford



The 3/4 calf boot is a taller version of the Mid Calf, complete with the protective toe piece.

Upper

Premier 15mm sheepskin upper.

3/4 Calf boot, comes three quarters of the way up your calf.

Heel counter and toe cap support and protect the upper.

Sole

Removable padded sheepskin innersole that moulds to your foot.

TPR sole for extra grip and durability.

Lockstitch side stitch machine locks the sole on.

Colours

Cane, Chestnut, Chocolate, Grey and black.

E5 Full Calf S/S Boot \$120.00



Chocolate



Chestnut



The full calf boot is a taller version of the 3/4 calf, also with the protective toe piece.

Upper

Premier 15mm sheepskin upper.

Full calf boot height is just below the knee.

Heel counter and toe cap support and protect the upper.

Sole

Removable padded sheepskin innersole that moulds to your feet.

TPR sole for extra grip and durability.

Lockstitch side stitch machine locks the sole on.

Colours

Cane, Chestnut, Chocolate and Black

Sheepskin Boots

E5L Full Calf Sidelace Boot \$135.00



Black



Chestnut



The full height lace boot is the same height as the Full Calf Style, which also has the protective toe cap. The lace is on the out side of the boot.

Upper

Premier 15mm sheepskin upper

The full height of boot is just below the knee.

Heel counter and toe cap support and protect the upper.

Sole

Removable padded sheepskin innersole that moulds to your feet.

TPR Sole for extra grip and durability.

Lockstitch side stitch machine locks the sole on.

Colours

Cane, Chestnut, Chocolate and Black

Sheepskin Boots

E8 Plains Ankle Lace Boot \$100.00



Chestnut



A classic sheepskin slipper design with a lace front for easy access and with the look of an everyday boot.

Upper

15mm sheepskin upper with a lace-up front. Heel counter and toe cap gives greater support with the upper.

Sole

Removable padded sheepskin innersole that moulds to your feet

TPR sole for extra grip and durability.

Colours

Cane, Chestnut, Chocolate and Black.

E13 Tall Cassidy Boot

\$150.00



A popular design sheepskin boot with an exterior wool feature. They can be worn with the top folded or unfolded.

Upper

15mm sheepskin upper with wool exposed seams. Full height unfolded is taller than the 3/4 design.

Sole

Removable padded sheepskin innersole that moulds to your feet. TPR sole for extra grip and durability. Lockstitch side stitch machine locks the sole on.

Colours

Cane, Chestnut, Chocolate and Black

F1 Short Wool Snug \$38.00



A classic New Zealand style slipper.

Upper
Premier quality 25mm shearling.

Sole
Cattle hide sole for indoor use.
Sheepskin innersole moulds to your foot.
Foam insert for added comfort.

Colours
White, Oaten, and Grey

F3 Long Wool Snug \$45.00



A long wool version of the classic short wool snug.

Upper
Premier quality long wool.

Sole
Cattle hide sole for indoor use.
15mm sheepskin innersole moulds to your foot.
Foam innersole for added comfort.

Colours
White (Ivory)

F4 Madison Slipper \$50.00



A new style slipper, which is very popular in the American market.

Upper
Standard 15mm twiface
Darted heel to curve around your foot.
Full fitting vamp for extra comfort.

Sole
Heavy duty eva sole for indoor and outdoor use
Sheepskin innersoles mould to your foot.

Colours
Cane, Chestnut, Chocolate, and Grey

Women's Slippers

F5 Classic Moccasin \$50.00



Chestnut



A classic New Zealand style moccasin

Upper

Standard 15mm twiface upper.
25mm Premier shearling trim.
Bound cap, and heel counter for extra strength.

Sole

Profile EVA, suitable for indoor and outdoor use.
Sheepskin innersoles to mould to your foot.
Non marking EVA.

Colours

Cane, Chestnut, Chocolate and Grey.

F6 Hide Moccasin \$50.00



Chocolate



Black

A traditional style moccasin, which is very popular.
A hard wearing slipper.

Upper

Quality cattle hide outer, with sheepskin lining.
Hand laced front vamp.
Shoe lace, enabling the slipper to be tightened.

Sole

Profile EVA, suitable for indoor and outdoor use.
Sheepskin innersoles to mould to your foot.
Non marking EVA sole.

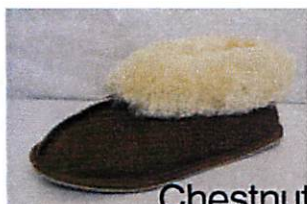
Colours

Cane, Chestnut, and Chocolate.

F7 Paddy Slipper \$40.00



Cane



Chestnut

Our best selling ladies slipper ever!
This is a good slipper which appeals
to all nationalities.

Upper

Standard 15mm twiface upper.
Standard 26mm trim for collar.

Sole

5mm EVA sole for indoor and outdoor use.
Sheepskin innersoles mould to your foot.

Colours

Cane, Chestnut, Chocolate & Grey

Women's Slippers

F7T Padabout Slipper \$45.00



Chestnut



Our best selling slipper with the new Taree TPR sole.

Upper

Standard 15mm twinface sheepskin upper.
Standard 26mm trim for collar.

Sole

New TPR Taree sole, flexible and lightweight.
Lockstitch side stitch machine, locks sole onto slipper.
Sheepskin innersole moulds to your foot.

Colours

Cane & Chestnut

F8 Anna Slipper

\$45.00



The Anna slipper is a good basic soft sole slipper.
Steadily becoming more popular.

Upper

Standard 15mm twinface.
Hide keeper to strengthen the front seam.

Sole

15mm sheepskin innersole to mould to your foot.
Bound edge for an improved finish and strength.

Colours

Cane & Chestnut

F11 Sarah Slipper

\$55.00



Cane



Chestnut

The Sarah (Ulti-Mate) slipper is the top
of the range EVA sole slipper.

Upper

Premier 15mm twinface to mould to your feet.
Hide keeper to strengthen the front.
Covered front seam to strengthen and protect
the seam.

Sole

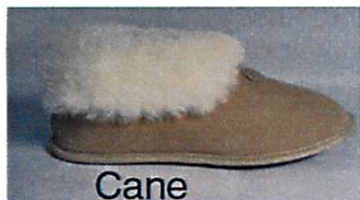
15mm innersole to mould to your feet.
EVA profile sole, suitable for indoors and outdoors.

Colours

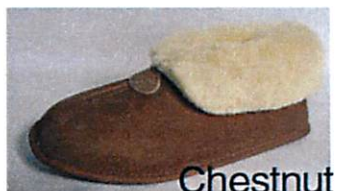
Cane & Chestnut

Womens Slippers Womens Slippers

F13 Ulti-Mate Soft Sole \$55.00



Cane



Chestnut

The Ulti-Roo soft sole slipper is the top fo the range, soft sole slipper.

Upper

Premier 15mm twiface to mould to, and warm your feet.
Hide keeper to strengthen the front seam.
Covered front seam to protect and strengthen.

Sole

15mm sheepskin innersole to mould to your foot.
Cattle hide sole for extra wear and tear.
Foam innersoles for extra padding and comfort.
Bound edge for an improved finish and strength.

Colours

Cane & Chestnut.

F15 Ulti-Mate Slipper \$60.00



Same style as the Ulti-Mate with covered seam for extra durability.

Upper

Premier 15mm twiface.
Covered front seam for extra durability.
Front keeper and heel counter for extra strength.

Sole

TPR sole which is hard wearing and flexible.
Removable padded sheepskin innersole that moulds to your feet.

Colours

Cane, Chestnut and chocolate

F15T Ulti-Mate Taree Slipper \$55.00



Chestnut



Cane

An American syled slipper which sells well.

Upper

Premier 15mm twiface.
Front seam covered for added strength and durability.
Hide support at the rear for added strength.

Sole

New TPR Taree sole, which is hard wearing, flexible, and lightweight.
Removable sheepskin innersole which moulds to your foot.
5mm eva padding for extra comfort and fit.

Colours

Cane & Chestnut

Women's Slippers Women's Slippers